

The Monthly Extractor



Volume 46, Issue 8

August 2021

This is our newsletter that reflects the various techniques, theories and art of sustainable beekeeping. Articles are contributed by SCBA members.

President's Message

Greetings Fellow Beeks,

What a picnic! It was so wonderful to see all of you and although I didn't get a chance to talk to you it looked like everyone was having a great time! I know I did!

Shannon Carr, our volunteer coordinator did a fantastic job! Thank you! (Take a look at her summary of the picnic and photos later in the newsletter.)

Volunteers, thank you for stepping up (especially those of you who helped out at the last minute)! We didn't run out of food or conversation!

As usual, lots has been going on behind the scenes. The biggest news is we are going to be meeting in person for the General Meeting in October. Woo-hoo! There is a change though. We are no longer meeting at the 4H Building in Rohnert Park. We will be meeting at the Druids Hall in central Santa Rosa. PLEASE look at the new map on page 2 of the Extractor.

There are also some membership changes coming down the pike; look for the e-mail next week.

The Gardening 4 Bees and Bee Share groups are busy creating new guidelines and opportunities for our members.

As we move into late summer and fall I'm going to be emphasizing the importance of planting for pollinators. I'm really looking forward to our presentation at the August General Meeting on "The Importance of Gardening for Bees" being presented by Christine Kurtz and Maryle Brauer.

I hope to see you there!



Kelli Cox

2021 SCBA President

president@sonomabees.org

August Calendar

Monthly Meeting: Monday, August 9, 2021

Speaker: Maryle Brauer and Christine Kurtz

Join us at 6pm Maryle Brauer and Christine Kurtz will be co-presenting "The Importance of Gardening for Bees". Join us to learn about what you can do to help create the much-needed forage for our pollinators. Now is the time to start thinking about fall planting. From dirt to flowers, you will discover what to plant, when to plant, and how to plant.

SCBA Zoom General Meeting

Sign on at: 6:00 to 8:30pm

<https://zoom.us/j/91746788250?pwd=NIFRTjR5bnhLMG44bG5LUkEwaDk5QT09>

Meeting ID: 917 4678 8250

Passcode: 944461

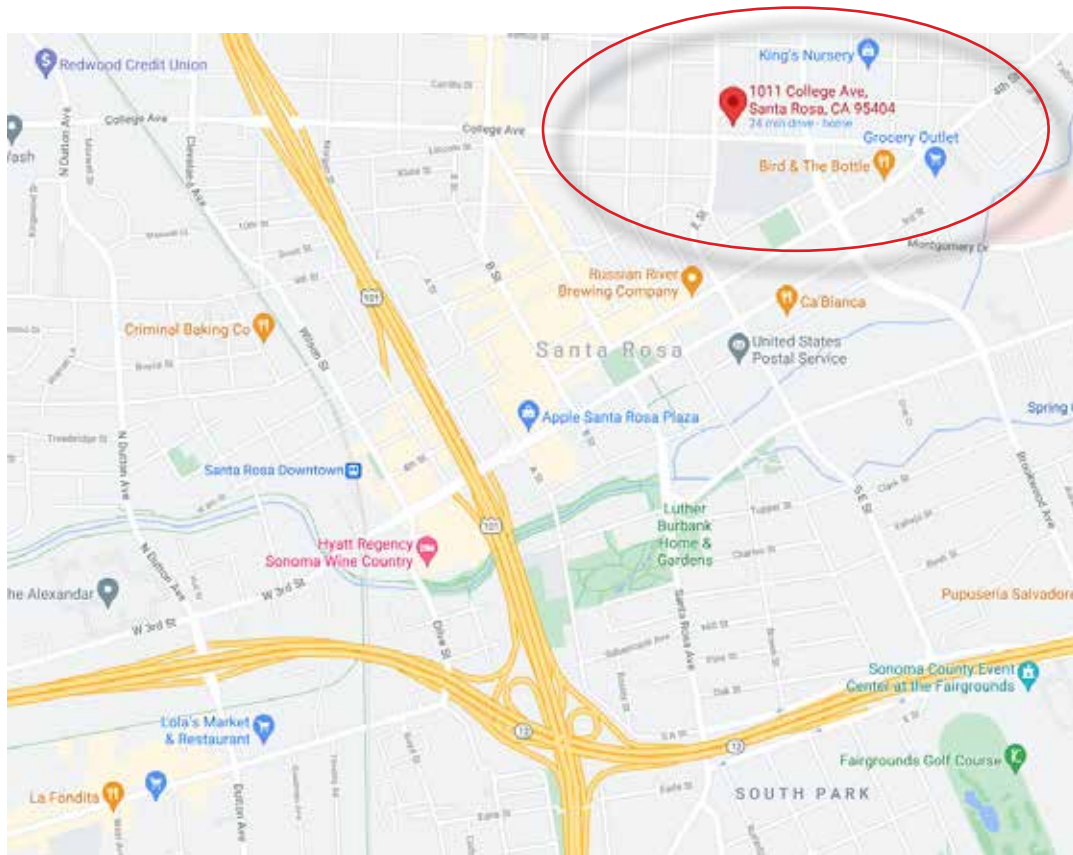
Contents

President's Message	1
June Calendar	1
MEETING UPDATE!	2
Thanks for All the Support	2
Regional Cluster News	3
Bee Plant of the Month	4
Ag Department	4
SCBA Summer Picnic	5
Picnic Photos	5
Research Buzz!	7
2021 Board Members	9
Contact Information	9
Honey Extractor Rental	9

MEETING UPDATE!

We plan to meet in person for our **October General Meeting, October 11**. Our location has changed to:

**Druids Hall
1011 College Ave.
Santa Rosa, CA 95404**



Thanks for All the Support By Ettamarie Peterson

As many of you know, I have been the beekeeping project leader for Liberty 4-H for many years. Over the years, members of SCBA have been very supportive and have donated bee equipment including boxes, tops, bottoms, smokers, hive tools, bee suits and even colonies of bees. Just recently Nick Freedman donated bees that he rescued in an extraction. He was concerned they did not have a queen so he added brood from his stock. Maryle Brauer learned that a colony I had intended to give a young beekeeper turned out to be queenless. She donated a small colony to add to my colony. I love my fellow SCBA members and want to thank all for their generosity! Your donations have made what could be a very expensive project much more affordable! These young people are our future adult beekeepers.

These are eight of my young beekeepers after our last group hive inspection. They range from 7 to 16 years old. The 7-year-old started when she was 5.



Regional Cluster News

Cluster Activities 2021

Mark your calendars for our planned August Zoom education gatherings. Zoom reminders will be sent via separate e-mails in August.

- Mon. August 9, 6:00pm: General SCBA Meeting: Ask the Expert starts at 6:00pm
- Mon. August 16, 7:00pm: New Beekeepers Forum
- Sat. August 21, 9:30am: Preparing for Winter, hosted by Nikki Hull-Campbell
- Mon. August 23, 7:00pm: Seasoned Beekeepers Forum

Swarm season is finally coming to an end. Rescuing July swarms is always a bit of a challenge, and this year was no different. This year's surplus "food stores" are scarce; and making difficult choices around how to care for a new swarm late in the season always pulls at our heart-strings! I have so enjoyed participating in both the New Beekeeper and Seasoned Beekeeper Forums. When I have questions, such as how to care for a new late-season swarm, I can get solutions and ideas from multiple beekeepers. Join us! The Monday evening Zoom sessions are full of positive buzzing energy!

KUDOS to swarm catchers and Bee Share Coordinators! This 2021 swarm season has been full of activity, some clusters busier than others. Let's take a moment and thank the SCBA volunteer swarm catchers and the Bee Share coordinators for a phenomenal season. **THANK YOU** to the swarm catchers and members who donated swarms and hive splits to the cluster Bee Share program. One by one we matched up swarms to beekeepers across SCBA. Although we didn't fulfill 100 percent of the requests, that is OK. We can't control the number of swarms that become available to us; however, we can make sure we take care of those we are blessed with. Regular hive status checks are key to verifying the "health" of your hive. If something is amiss, and you catch it early, quite often there are multiple solutions for these possible challenges. Stay in tune with other beekeepers when you have a challenge. Seek out feedback and ideas before jumping to conclusions. We are here to help!

Rorie Sweeney
Regional Coordinator

From the Desk of our Volunteer Coordinator

I had a great time meeting everyone at the Summer Picnic. Again thank you everyone who came out, spent their afternoon with us, and those who helped and volunteered.

These last couple months have gone by quickly. I have been working closely with SCBA president Kelli Cox and the board, learning all about SCBA, what we do, and meeting the amazing people involved. It has been a great beginning to what I know is going to be an amazing journey!

One of my main goals is to work with our educators and expand our education program. We wish to strengthen our internal education programs and rebuild our external education programs. For this, SCBA needs your help. We are looking for volunteers in a number of ways.

Do you like working with books? Did you know we have a library? Our librarian, Nadya Clark, has done an amazing job over the years, managing and building up our library, but she could use some assistance. We are looking for one or two people who can help with the process of checking out and checking in books at meetings, maintain the database, and research items we should add to our library -- books, DVDs, or other materials.

Seasoned Beekeepers -- I would love to invite you to join Liz and me in supporting our "new bees" by answering their questions and addressing their concerns at the "New Beekeepers Forum" on the third Monday of each month. If you are available and would like to help, please let me know.

Hive dives online! -- Mohammed Ibrahim is working on doing live hive dives on Facebook for each cluster group. This is a fun way to reach out and connect with your cluster with those who may not be able to attend in person. If you would like to participate, let me know.

In looking forward to 2022, there are a number of roles we need to fill -- cluster coordinators, gardening partners, coaches, educators, just to list a few, as well as a variety of behind the scene support roles. If any of this sounds interesting to you, please contact me for more information.

I am looking forward to working with you!

Shannon Carr
Volunteer Coordinator
volunteercoordinator@sonomabees.org

Bee Plant of the Month

August 2021

By Alice Ford-Sala

Echinacea Coneflower Family: Asteraceae

Echinacea is one of the best-known medicinal herbs, widely used worldwide for immunity, respiratory, anti-bacterial and anti-fungal benefit. Tinctures and teas are made from the whole plant or roots.

Bees love the daisy-shaped flowers, following the spiral of pollen and nectar held in the many tiny florets that make up the cone. Birds like feasting on the seeds in autumn.

A beautiful North American native, Echinacea is a meadow, prairie, and woodland plant. Generally, very easy to grow, they just need full sun (in very hot areas, some afternoon shade is appreciated), minimal to moderate water and average to poor soil. They develop large taproots, so try to plant in an area where they can settle down and thrive.

Echinacea has become very popular in recent times, so much so that wild harvesting has damaged native populations. So, how about growing some in your garden? Plant some in a container with other herbs such as dahlia and cosmos, or in a border with Agastache, Rudbeckia, Goldenrod, sages etc.

As with most bee plants, the single-flowered varieties are most beneficial. Single flowers are those with only one row of petals, leaving the pollen and nectar center open to pollinators. Double flowers usually have several rows of petals, and the center is often obscured. Many recently developed varieties are double-flowered; our bees and other pollinators can't access the pollen and nectar, if

there even is any.

Some bee-friendly varieties are:

E. purpurea. Purple Coneflower. This is the most common variety, with 3- to 4-inch long leaves on a 3-foot high by 2-foot wide plant. The flowers have pink-purple petals and a large center cone of tiny flowers.

'Magnus' is a striking plant, with large flowers, and red-purple flowers with an orange center.

'Mellow Yellows' has long yellow petals and a yellow center.

'White Swan' is white with a contrasting golden cone.

'Fragrant Angel' is very fragrant, and borne on large, vigorous plants.

You can propagate Echinacea by seed, root cuttings, or transplanting the babies that may come up in your garden.



Alice Ford-Sala

Ag Department Apiculture IS Agriculture

Greetings, Beeks!

The past month has been fairly quiet for Apiary calls, so I'll use this opportunity to update the numbers: Sonoma County currently has 57 registered beekeepers. Of those, 44 listed Sonoma as their "home county." A beekeeper listing another county as their home county does not necessarily mean they live elsewhere. It means the first registration of any hives was noted in another county, and the \$10 registration fee was paid to that other county. The registration fee is only paid to one county, even if a keeper maintains hives in multiple counties.

There are currently 257 registered apiary locations in Sonoma County, with a grand total of 12,243 colonies.

Locations with zero colonies were excluded from the count. Many hives are moved between locations, depending on what is blooming in the area, property owner agreements, and other reasons. Regulations require updating the locations and colony counts within 72 hours of hive movement.

During the month of June 2021, there were 70 Bee-Checks run by growers/operators to find out if registered hives are within a mile of an intended application site.

The BeeCheck is only required when a grower will be applying a product with labeling that indicates toxicity to bees and

applying it to a blossoming plant. The BeeCheck enables to grower to contact the registered beekeepers with the information about the planned pesticide application.

If you feel your registered hives have suffered loss due to pesticide poisoning, and you did not receive notification of an application, please contact me to collect samples for analysis. Sample testing is completed at no charge to registered beekeepers.

Hive registration is required if your hives are not on your own property or if you sell any product such as honey, comb, etc. If Sonoma County is your "home county", then your \$10 registration fee (regardless of number of hives) and registration number can be phoned in at our main office: (707) 565-2371 or mailed to:

Sonoma County Department of Agriculture
133 Aviation Blvd, Suite 110
Santa Rosa, CA 95403

Feel free to contact me with any questions.

Beverly Hammond
Beverly.hammond@sonoma-county.org
Sonoma County Senior Agricultural Inspector

SCBA Summer Picnic

Wow! What an evening! Thank you everyone who came out to our Summer Picnic. So many of our members and their families joined us for a great afternoon of seeing old friends and making new ones. We got to chat and catch up, play games in the Lavender Labyrinth, walk around the grounds, and fill in the blanks of the scavenger hunt!

Huge thank you to Susan Kegley who donated the use of Bees N Blooms to us for the day. It is absolutely gorgeous out there and everyone enjoyed walking around the campus, seeing the ducks, geese, chickens, and wildlife, finding the willow dome and bee log, seeing the pond, and walking the labyrinth. Thank you to all our members who stepped up to help; some were there early to set up, others helped prep dinner, still more served food, and many stayed late cleaning and packing up. The picnic would not have been possible without you and everyone had an amazing time. Thank you!

Congratulations to Gail Kalloch and Elaine Dolcini who fully completed the scavenger hunt and won a little gift from Bees N Blooms from the drawing at the end of the evening.

On the scavenger hunt we asked two questions – What is your favorite thing about SCBA? and What would you like to see in the future within SCBA? Nearly everyone answered that their favorite things about SCBA are the people and the community, and I could not agree more.

If you did not get a chance to answer those questions, or were not there, I would love to hear your response. Email me at volunteercoordinator@sonomabees.org.

The most frequently asked question I got at the picnic was: How do I learn more about the Gardening 4 Bees program? If you would like to learn more our gardening program email our gardening coordinator at gardening@sonomabees.org

Lastly there was a jacket left behind, if you are missing a jacket, let me know.

Thank you again to all who came out and everyone who volunteered and made it a great success!

Shannon Carr

SCBA Volunteer Coordinator

<https://www.sonomabees.org/>

<https://www.facebook.com/sonomacountybeekeepers>

Picnic Photos



Checking in



Our Cheerful Servers



More Servers



Servers and food runners were great!

More Picnic Photos!



Research Buzz!

By Gina Brown

Can the expansion of solar energy help to save bees?

I'm determined to find some positive news about bees this month! I stumbled upon this interesting concept of creating pollinator-friendly habitats in connection with solar energy expansion.

From 2009 to 2019, The use of solar energy grew 49 percent in the US.(1) That trend is likely to continue. Picture, if you will, large scale solar "farms", dotting the rural landscape across our county. Wouldn't you prefer to see a landscape dotted with flowers? Of course!



If you'd like to suggest a topic of research to explore, you can email me: boragelane@comcast.net

Sources:

1. M. R. Chowdhury, A. M. Jobayer and L. Zhao, "Potential of Distributed Energy Resources for Electric Cooperatives in the United States," 2021 IEEE/IAS 57th Industrial and Commercial Power Systems Technical Conference (I&CPS), 2021, pp. 1-9, doi: 10.1109/ICPS51807.2021.9416624.
2. Photo credits: Solar field with flowers, Rob Davis.
3. Adam G Dolezal, Jacob Torres, Matthew E O'Neal, Can Solar Energy Fuel Pollinator Conservation?, Environmental Entomology, 2021, nvab041, <https://doi.org/10.1093/ee/nvab041>
4. Walston, Leroy J., Li, Yudi, Hartmann, Heidi M., Macknick, Jordan, Hanson, Aaron, Nootenboom, Chris, Lonsdorf, Eric, and Hellmann, Jessica. Modeling the ecosystem services of native vegetation management practices at solar energy facilities in the Midwestern United States. Netherlands: N. p., 2021. Web: <https://doi.org/10.1016/j.ecoser.2020.101227>.

We already have a federal program, The USDA Conservation Reserve Program (CRP), which provides financial incentives for private land owners to convert agricultural land to conservation. The CRP has many different conservation programs, and only CP42 "Pollinator Habitat Planting," is explicitly designed for pollinator habitat. As of 2020, CP42 is only about 2 percent of all CRP land (505,395 acres from a total of 21,950,920 acres).(3) To put that into perspective, both corn and soybeans are projected to each have more than 90 million acres planted across the US in 2021! Clearly, we need more land dedicated to pollinator habitat. This would be a perfect time to plan for and expand the practice of "agrivoltaics," in which land developed for solar energy generation is concurrently used for farming.

Lastly, I found this great study that demonstrates actual benefit to this model. Researchers studied 30 solar facilities across seven midwestern states. They compared pre-solar agricultural land use to solar land use planted with native grassland habitat and the results were stunning. The planted solar projects produced a 3-fold increase in pollinator forage, a 65 percent increase in carbon storage, a retention of topsoil increase of 95 percent, and a 19 percent reduction in water usage.(4)

I think our bees need more solar projects! What do you think?



Marin Coastal Bee Co.
Local Raw
HONEY

Bee Hive Management & Local Honey Sales

Michael Turner
Owner/Beekeeper
415/871-4662

info@marincoastalbee.com



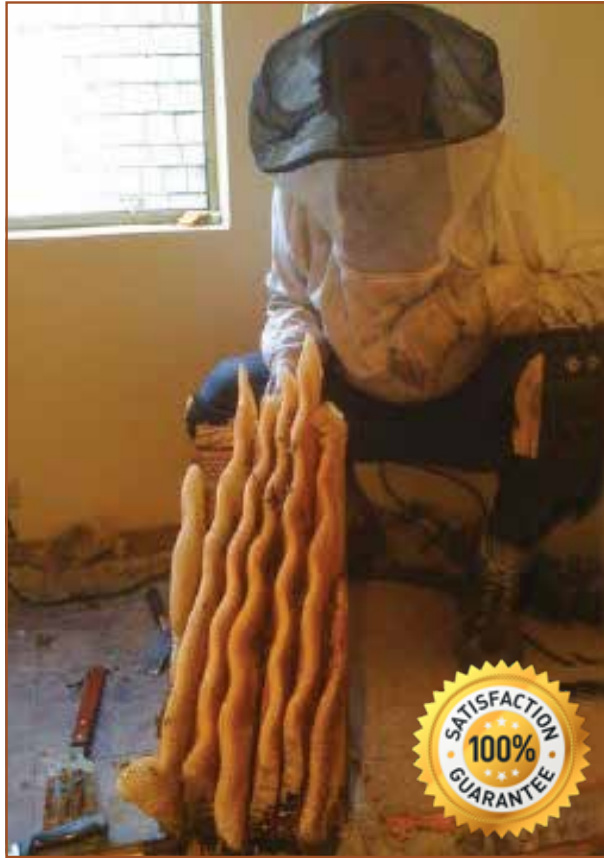
R Honey Pots
Pottery, Beekeeping & Metalwork

Liz Russell & Joey Romo R
Forestville, Ca

A husband and wife team specializing in the extraction of bees from buildings since 2001

(707) 696-0861/540-2551

www.RHoneyPots.com email: RHoneyPots@gmail.com



Bee Conscious Removal

---LIVE BEE REMOVAL---

We specialize in removing bees alive from walls, barns, sheds, and trees.

"Difficult" extractions are our specialty.

Beekeeping lessons offered at reasonable prices.

Wild bee colonies for sale.

We've been in business locally for 16 years and have done over 850 honeybee extractions so far!

Call Chris Conrad at 415-350-5700
Santa Rosa

www.beeconsciousremoval.com

Free Bee Colony For Successful Referral.



Providing Quality
BeeHives and
Components at an
Affordable Price

- ~ Complete Hives ~ Screened Bottom Boards ~
- ~ Supers with Frames and Follower Boards~
- ~ Top Feeders ~ Vented Top Covers ~
- ~ Wired Frames ~ Follower Boards ~
- ~ Telescoping Top Covers ~ Hive Stands ~
- ~ Wooden Swarm Traps ~ Solar Wax Melters ~

Visit www.goahwayranch.com
for prices and details

*Designed and endorsed by Serge Labesque
Recommended by Christine Kurtz*

John McGinnis

(707) 478-9787

803 Lynch Rd, Petaluma, CA 94954

By appointment only
goahwayranch@gmail.com

ORDER BEES NOW

Local packaged queens are daughters of locally adapted stock that have been untreated. Queens are open mated in nearby Capay Valley w/commercial drones

(707)
824-2905
Open
Everyday

921
Gravenstein
Hwy. S.
Sebastopol

LOCAL
ITALIAN &
CARNIOLAN
PACKAGES

ALL THE
SUPPLIES
& GEAR

GREAT
PRICES &
SERVICE

beekind.com EVERYTHING
SEBASTOPOL YOU NEED!

2021 Board Members and Other Helpful People

Click Here
for the Up-to-Date
Roster of SCBA Resources

Contact Information

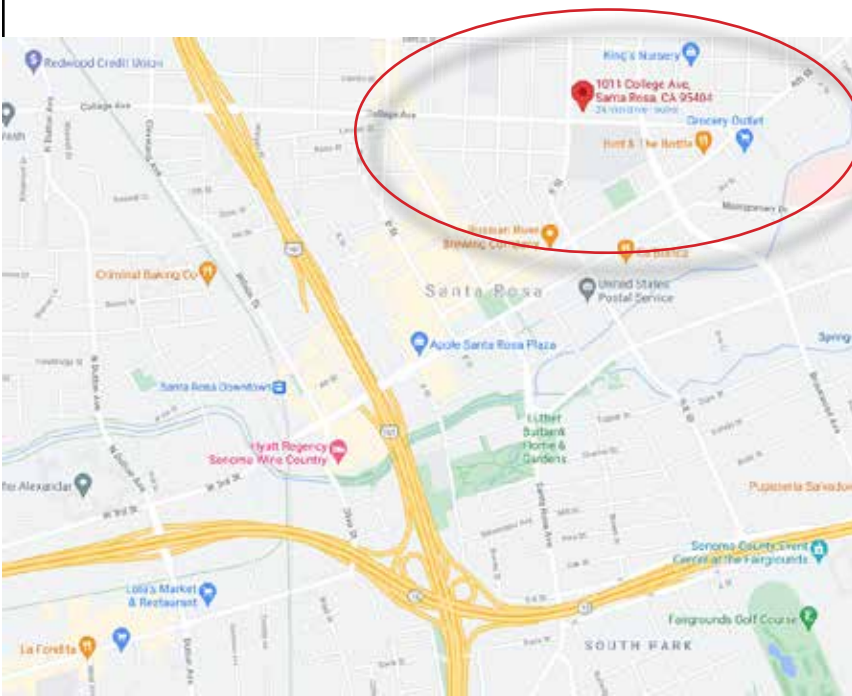
CHANGE: Regular monthly meetings of the Sonoma County Beekeepers' Association will now be held on the second Monday of each month at the Druids Hall in 1011 College Ave., Santa Rosa. The meetings cover a wide range of

topics of interest to beekeepers. Everyone wanting to learn about honeybees is cordially invited to attend. You do not need to be a member nor a beekeeper to attend these meetings. Dues can be paid online at our website sonomabees.org, at our monthly meetings or by mail. Please see our Website for the application and various kinds of memberships available.

6 pm – Meet your cluster members; ask questions; meet new members; bring your own cup and fill it with tea or coffee and have some goodies.

7 pm – Presentation starts. (See page 1 of this newsletter for speaker details.)

Our mailing address is:
Sonoma County Beekeepers' Assoc.
P.O. Box 98
Santa Rosa, CA 95402-0098



Honey Extractor Rental

One of the benefits of SCBA membership is access to our honey extractors. We currently have a honey extractor for each cluster as well as one fruit press shared across all regions. Members can find the terms of this rental, as well as the necessary contact information, in the "SCBA Members-Only Info" section of the website. To see this section you will need to be logged in. Happy spinning and crushing!