

The Monthly Extractor



Volume 46, Issue 1

January 2021

This is our newsletter that reflects the various techniques, theories and art of sustainable beekeeping. Articles are contributed by SCBA members.

President's Message

Dear Fellow Beeks,

Well, it's finally here – 2021! Happy New Year to all of you. So, let's all take a big super breath and look to 2021 as a fresh start!

I am really excited to be your SCBA President this year and thank you for electing me (against all the other contenders) LOL!

I, too, am taking a breath and am already seeing the green grass of our Sonoma County hills, fresh shoots of new bulbs and buds on the trees. 2020 gets to be a thing of the past and now we get to focus on new beginnings. YEA!

Having said that – and knowing many of the challenges that we collectively faced in 2020 – we are still facing uncertainties, at least for the beginning of 2021. We are still going to be facing the challenges that Covid has created – social separation, fear, unpredictability, frustration to mention a few. But I'd like to hope that through this adversity, we've also learned a good many things: care, patience, tolerance, techy stuff (Zoom!), and the need for checking in on one another, to mention a few.

For those of you who know me, I consider myself a glass half-full (if not always) kinda gal. I truly believe in community and I have grown to love our bee community. We are a unique collective that is in love with the honey bee, and that makes us special. We tend and care for a small insect that is integral to this planet. We tolerate being stung, losing colonies, spending small fortunes on equipment, and a host of other things because we've literally become addicted to the management of the honey bee. How cool is that! Some might argue crazy but that's all part of the fun.

As I write this message to you (on Christmas Day) it is raining! I'm hoping it continues for most of the next few months.

Take time to think about what you need to do to be prepared in February when those little fur balls start ramping up. Perhaps find a day to clean your equipment or make some frames. Check in with your clusters and bee budd(ies) to see what's coming down the pike.

I'm really looking forward to seeing you at our January meeting. We're going to be shifting a few things so make sure you join us so you're not out of the loop. :)

Until then, bee well and stay safe.

All the best,



Kelli Cox
2021 SCBA President

JANUARY CALENDAR

Monthly Meeting: Monday, January 11, 2021

SCBA Zoom General Meeting
Sign on at: 6:00 to 8:30pm

Join Zoom Meeting

<https://zoom.us/j/94159980856>

Meeting ID: 941 5998 0856

Please join us at 6PM for our monthly meeting featuring **Hilary Kearney of Girl Next Door Honey on *Hive Inspections***. Girl Next Door Honey focuses on bee-centric programs and this talk will detail Hilary's approach to hive inspections. [Read more on Page 2.]

Contents

President's Message	1
January Calendar	1
January Speaker	2
Regional Cluster Coordinator News	2
New Board Members	2
Bee Plants for January	3
Message From Your Editor	4
The Queen Excluder, a Poem	4
Agricultural Commissioner's Office	5
2021 Board Members	8
Contact Information	8
Honey Extractor Rental	8

January Speaker

Hilary Kearney of Girl Next Door Honey on Hive Inspections

Hilary Kearney founded Girl Next Door Honey in 2012 in her home town of San Diego, California, after graduating from UC Santa Cruz with a degree in Fine Art. Breaking from tradition, she developed a beekeeping business that does not rely on honey sales or pollination services for economic success. Instead, Girl Next Door Honey focuses on bee-centric programs such as natural beekeeping classes, apiary management, classroom presentations, beehive tours, live bee removal and more!

Hilary's beekeeping exploits and unique business model have inspired people all around the world. She is the author of the beekeeping blog Beekeeping Like A Girl and maintains a popular Instagram account. When she's not rescuing bees, teaching about bees, photographing bees or managing one of her fifty colonies, she's sleeping and dreaming of bees.

Regional Cluster Coordinator News

Cluster Activities 2021

Here we are! 2021 is under way and our Clusters are getting organized for this next buzzing season. Our new Coordinator Team will meet on January 7 to start planning for the year, including finalizing a member survey. This survey will be focused on hearing from you, how and what you may be interested in learning about this next beekeeping season. Various teaching videos were created this past year so members could watch at their leisure. We hope to have more of that this year. Perhaps you will be interested in learning in an outside small-group experience.

Please take a few minutes to complete the survey when you receive it and help SCBA/Cluster Coordinator Teams plan for 2021.

Rorie Sweeney
Regional Cluster Coordinator

MORE FROM YOUR PRESIDENT

Upcoming Q&A - Your Questions Needed!

Great news beekeepers! We have been working hard to adapt our association to COVID safety and are pleased to announce that we will be hosting an "Ask the Experts" Question & Answer session at the upcoming general meeting from 6 - 6:40 pm! This means you can send in any question you like and one of our local knowledgeable experts will provide an answer during the first portion of the general meeting on Monday, January 11. Any and all questions are welcome, although if there are too many, the experts will keep them for our next meeting and/or combine answers. Additionally, we will have 20 minutes for you to ask questions on the spot.

Submitting questions is easy: Just log in to the SCBA website and go to the Members-Only Section. There you can find the page "Ask the Experts" and ask away! I am looking forward to seeing you on Monday, January 11 for a wonderful New Year General Meeting.

General Meeting Agenda

6pm	Zoom Meeting opens
6:05	"Ask the Experts" Q&A begins
6:40	SCBA news and meet our newbees
7:00	Presentation begins
8:00-8:30	Presentation concludes
8:30	End of meeting

Welcome to Our New Board Members

President	Kelli Cox
1stVP	Carol Ellis
2ndVP	Candice Koseba
Secretary	Andy Baxter
Treasurer	George Herrmann

Newly appointed At Large Members

At Large 1	Leslie Perlman
At Large 2	Angelo Sacerdote
At Large 3	Kristi Lucas-Hayden
At Large 4	Cheryl Caletti

BEE PLANTS FOR JANUARY

By Alice Ford-Sala

Sage

Salvia

Family: Mint *Lamiaceae*

"Salvia" is from the Latin, and speaks of healing, salvation, and has been honored as a medicinal plant for eons. "Sage" also is said to impart wisdom. Lore has it that it is beneficial for coughs and other respiratory issues. It is said to increase fertility but is also said to be contraindicated for use in pregnancy and breastfeeding.

All sages need very good drainage, full sun to afternoon shade. They are generally drought tolerant, especially the California natives. Deer and rodents generally avoid them.

S. apiana, California White sage, Bee Sage, White sage gets tall and rangy, but plant it in the back of a pollinator garden and watch the bees, hummingbirds and butterflies dance around the blossoms. A very important forage plant for native bees as well as honeybees. Used in native Californian healing and cleansing practice, it is often bundled and sold as a smudge stick.

S. officinalis, Garden Sage or Culinary Sage, this is delicious in soups, stuffings, and many people make a tea from the leaves for medicinal uses 'Purpurascens' is very attractive with purplish leaves and lavender-blue flowers. Some varieties don't bloom at all, which makes them useful for cooking, but bees won't go to them.

S. mellifera, Black Sage, Honey Sage is adored by all kinds of bees. It is native to California and has long been an important forage plant for honeybees and natives. Growing 3-5 feet tall and as wide, it blooms in late spring with tall whorls of white to lavender-blushed flowers. The very aromatic leaves are gray-green and lance shaped.

S. leucophylla, Purple Sage is another native. The fine white hairs on the leaves make it look fuzzy as they age. Flowers are pink-purple. 'Point Sal' is a good ground cover as it only grows 1-2 feet tall but spreads up to 10 feet wide.

S. nemorosa is native to Europe and Asia. I have found that honeybees especially love the blossoms. They are shallower than some other sage flowers, so the nectar is more accessible. 'Ostfriesland' has deep purple flowers borne in numerous spikes. 'Cardonna' has violet flowers. Grows in a compact 2-3-foot-tall and 2-3-foot-wide plant. Blooms all summer and well into fall.

There are so many more salvias, this is a very important and beneficial plant for our gardens, our pollinators and ourselves.



Santa Barbara Sage

Photo by Ettamarie Peterson



Alice Ford-Sala

From Your Editor

For many, many years we were extremely fortunate to have Serge Labesque give us his words of wisdom, guiding us through our beekeeping tasks throughout the year. While we know his is a hard act to follow, we are looking for a writer who can contribute a monthly column to the newsletter. It is extremely beneficial to all beekeepers, especially the newest ones. Let me know if you want to do this! Send me an email to ettamarie@petersonsfarm.com. Your column will be considered your opinion, but it should be based on good science, as Serge's always was.

Go to www.sonomabees.org to renew your membership if you have not done so yet! You will not be on our swarm list unless you have paid for 2021!

The Queen Excluder

A Poem by Chris Slade
(in his book *Bee People* used with his permission)

I'd like to keep the queen down in her place.
The revolution says she must not rise.
I do quite like to see her royal face
Way down among the lowly girls and guys
Confined down there within the bottom box
She cannot rise to rule and do some harm.
She may perhaps be cunning as a fox
And emigrate and take away a swarm.
I wonder whether, if, I should instead
Put the queen excluder underneath,
Allowing her full access overhead,
But stuck inside the hive until her death.
On second thoughts, I would not see her die
So "Freedom, Freedom, Freedom!" is my cry.

Letter to All of Us from the Agricultural Commissioner's Office

Dear Beekeepers,

Happy END OF 2020!

While this year presented great challenges, it also provided opportunities for the Sonoma County Department of Agriculture to continue outreach and education to our growers regarding pollinator protection.

During 2020, we saw over 1200 BeeChecks conducted by growers who would be applying products which were labeled as "toxic to bees." These BeeChecks indicated whether or not any registered apiaries were within 1 mile of the intended application area, and if so, how to notify the beekeeper of the impending application. We also saw growers select alternative products which are friendlier to pollinators.

Our department responded to 2 beekeeper requests for hive inspections after suspect pesticide poisoning. We collected samples for pesticide residue analysis and were able to rule out pesticide poisoning as the cause of loss at those hives. Those tests were conducted at no charge to the beekeepers.

We also responded to complaints from various residents regarding beehive placements. In each of these incidents, we were able to assist the beekeepers with any applicable regulation compliance, while educating the residents about the rights of beekeepers.

Moving into 2021, our outreach to growers will continue, as well as hive inspections, complaint response, and regulation enforcement activities.

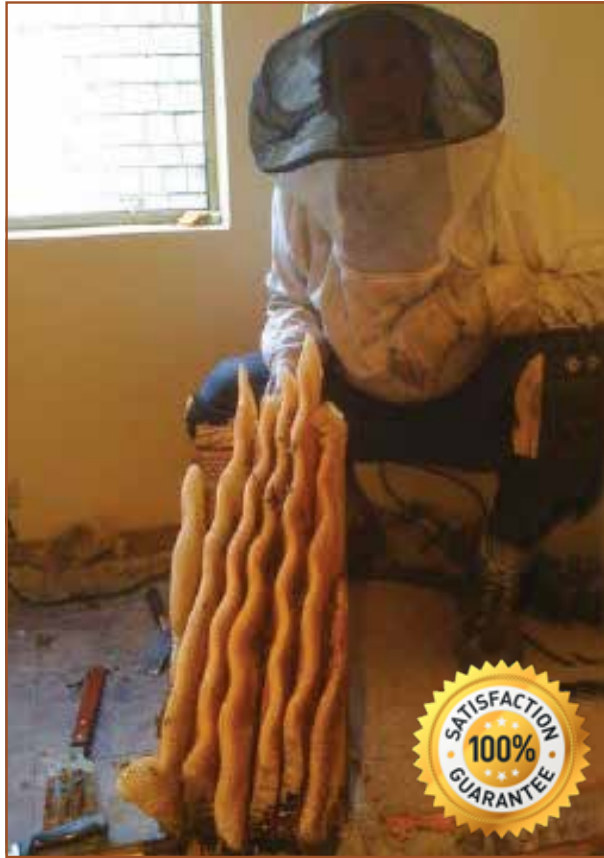
All hive registrations must be renewed each January. Beginning in 2021, the Sonoma County Department of Agriculture will be collecting the annual \$10 hive registration fee. If you have hives in multiple counties, the hive registration fee is only paid to your "home" county.

Payment can be made by mailing a check to the department or calling the office with credit card information. Please include your registration number with your payment.

If you need assistance with the BeeWhereCalifornia.com site for your annual hive registration, please contact the Ag Department.

Thank you for your participation in the pollinator protection program. We look forward to a "buzzy" new year!

Beverly Hammond



Bee Conscious Removal

---LIVE BEE REMOVAL---

We specialize in removing bees alive from walls, barns, sheds, and trees.

"Difficult" extractions are our specialty.

Beekeeping lessons offered at reasonable prices.

Wild bee colonies for sale.

We've been in business locally for 16 years and have done over 850 honeybee extractions so far!

Call Chris Conrad at 415-350-5700
Santa Rosa

www.beeconsciousremoval.com

Free Bee Colony For Successful Referral.



Providing Quality
BeeHives and
Components at an
Affordable Price

- ~ Complete Hives ~ Screened Bottom Boards ~
- ~ Supers with Frames and Follower Boards~
- ~ Top Feeders ~ Vented Top Covers ~
- ~ Wired Frames ~ Follower Boards ~
- ~ Telescoping Top Covers ~ Hive Stands ~
- ~ Wooden Swarm Traps ~ Solar Wax Melters ~

Visit www.goahwayranch.com
for prices and details

*Designed and endorsed by Serge Labesque
Recommended by Christine Kurtz*

John McGinnis

(707) 478-9787

803 Lynch Rd, Petaluma, CA 94954

By appointment only
goahwayranch@gmail.com

ORDER BEES NOW

Local packaged queens are daughters of locally adapted stock that have been untreated. Queens are open mated in nearby Capay Valley w/commercial drones

(707)
824-2905
Open
Everyday

921
Gravenstein
Hwy. S.
Sebastopol

**LOCAL
ITALIAN &
CARNIOLAN
PACKAGES**

**ALL THE
SUPPLIES
& GEAR**

**GREAT
PRICES &
SERVICE**

**beekind.com EVERYTHING
SEBASTOPOL YOU NEED!**



Bee Hive Management & Local Honey Sales

Michael Turner
Owner/Beekeeper
415/871-4662

info@marincoastalbee.com



R Honey Pots

Pottery, Beekeeping & Metalwork

Liz Russell & Joey Romo R
Forestville, Ca

A husband and wife team
specializing in the extraction
of bees from buildings
since 2001

(707) 696-0861/540-2551

www.RHoneyPots.com

email: RHoneyPots@gmail.com



2021 Board Members and Other Helpful People

Click Here
for the Up-to-Date
Roster of SCBA Resources

Contact Information

Regular monthly meetings of the Sonoma County Beekeepers' Association are held on the second Monday of each month at the Rohnert Park 4-H Building. The meetings cover a wide range of topics of interest to beekeepers. Everyone wanting to learn about honeybees is cordially invited to attend. You do not need to be a member nor a beekeeper to attend these meetings. Dues can be paid online at our website sonomabees.org, at our monthly meetings or by mail. Please see our Website for the application and various kinds of memberships available.



6 pm – Meet your cluster members; ask questions; bring your own cup and fill it with tea or coffee and have some goodies.

7 pm – General meeting starts. (See page 1 of this newsletter for speaker details.)

Our mailing address is:
Sonoma County Beekeepers' Assoc.
P.O. Box 98
Santa Rosa, CA 95402-0098

**REMEMBER: This month's
meeting is a ZOOM Meeting
(see page 1 for details!)**

Honey Extractor Rental

One of the benefits of SCBA membership is access to our honey extractors. We currently have a honey extractor for each cluster as well as one fruit press shared across all regions. Members can find the terms of this rental, as well as the necessary contact information, in the "SCBA Members-Only Info" section of the website. To see this section you will need to be logged in. Happy spinning and crushing!