



**Help The
Bees!**

**MAKE YOUR GARDEN
AN OASIS FOR
POLLINATORS**

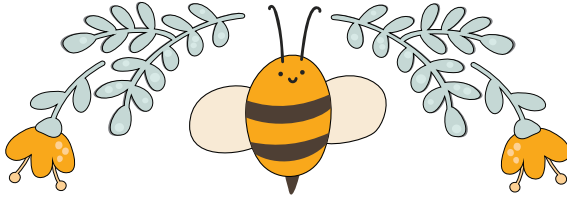


**PLEASE DON'T USE
PESTICIDES**






(Turn over to
learn how)



sonomabees.org



CONTROLLING WEEDS AND PESTS IN THE GARDEN:

-  Learn about **Integrated Pest Management (IPM)** to keep unwanted critters out of your garden, without pesticides. You can wash unwanted insects off of plants and/or remove infected vegetation. Using no pesticides at all makes for a more bee-friendly garden. If you must use pesticides in your garden, choose lowest-risk products and **avoid using when flowers are in bloom**. Pesticides that target specific pests may pose less harm to pollinators. Always follow label directions. If pesticides must be applied, do so when not windy, at dawn or dusk when exposure to bees is least likely.
https://www.cdpr.ca.gov/docs/pestmgmt/community_ipm/bee_friendly_with_ipm.pdf
-  The safest option for weed removal is manual weeding. Pull weeds, then add mulch and cardboard layers to stifle regrowth. Don't spray. The herbicide Roundup (glyphosate) has been linked to bee death. Keep in mind that all flowers, including weeds, provide beneficial forage for pollinators.
<https://news.utexas.edu/2018/09/24/common-weed-killer-linked-to-bee-deaths/>
-  Avoid neonicotinoids (neonics) - these systemic pesticides harm bees, insects and birds and are commonly found in rose and tree insecticide products. A few bees coming home with neonicotinoids can kill an entire colony. Before you buy, ask if plants or seeds have been treated with neonicotinoids.
<https://www.panna.org/sites/default/files/PAN%20AP%20pesticides-factsheet-hhps-neonicotinoids.pdf>
-  Choose plants for your garden that do not need pesticides or herbicides, such as native plants. Ask for native flora at your local nursery.
<https://milobaker.cnps.org/index.php/nativeplants/gardening-with-natives>
-  Consider reducing or replacing your lawn with pollinator plants. Many lawn pesticides are harmful to bees and other animals and all pesticides, even organic ones, are fatally toxic to bees.
<https://www.beyondpesticides.org/assets/media/documents/bp-fact-lawnpesticides.081817.pdf>

MORE RESOURCES TO LEARN FROM:

<https://sonomabees.org/Gardening>

<https://www.xerces.org/pesticides>

<https://www.sonomasass.org/about>

<https://www.cdpr.ca.gov/docs/enforce/pollinators>

To join or support SCBA and our education programs:

www.sonomabees.org

